



INSTALLATION GUIDE

Waterbridge 900-Series Exposed Showers

Aug 2023

WaterBridge Thermostatic Exposed Showers are available in four standard wall-mounted configurations:

WB-SHW-940	Rain head only
WB-SHW-950	Rain head and handshower
WB-SHW-970	Rain head and tub filler / footwash
WB-SHW-980	Rain head, handshower, and tub filler / footwash

Custom showers are available by special order. Please contact Sonoma Forge for more info.



It is strongly recommended that this fixture be installed by a professional plumber.

Waterbridge Thermostatic Exposed Showers are installed onto 3/4" pipe thread.

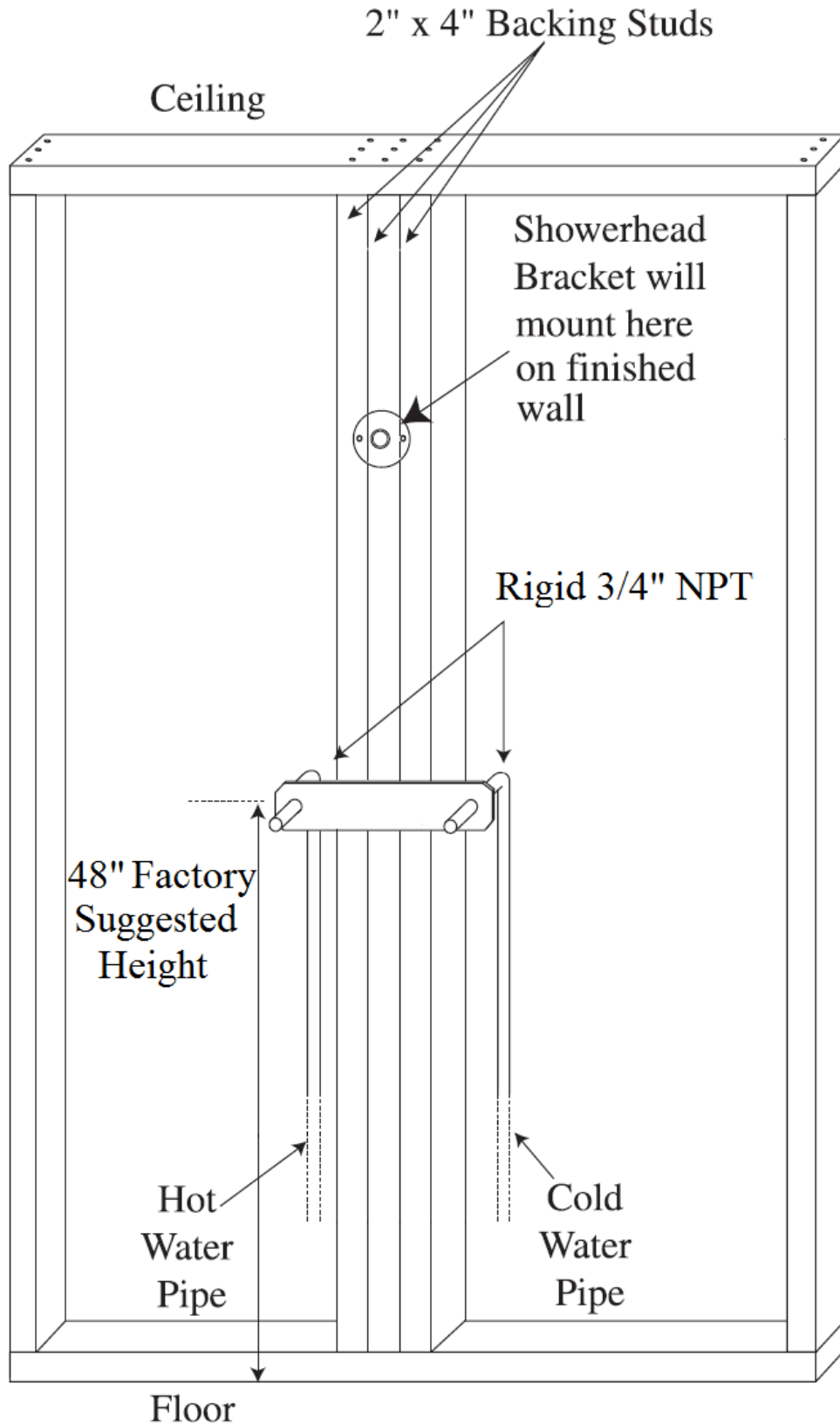
**The 10-3/4" center-to-center spread may vary up to 1/4".
Please measure the system you receive before securing supply lines in the wall.**



INSTALLATION GUIDE

Waterbridge 900-Series Exposed Showers

Aug 2023



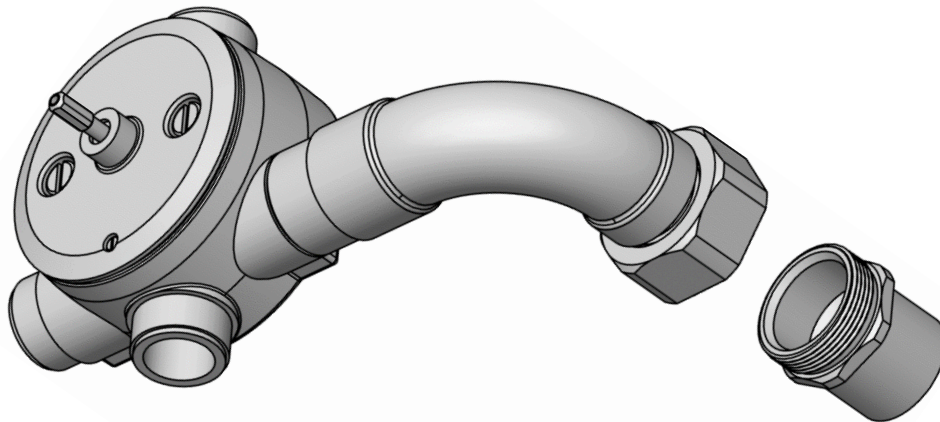


INSTALLATION GUIDE

Waterbridge 900-Series Exposed Showers

Aug 2023

- 1) Determine a height for the rain head. The face of the rain head is 36" from the center of the inlets.
- 2) Additional framing should be installed in the wall behind the mounting bracket for support.
- 3) Plumb 3/4" NPT pipe and secure it in the wall.
* The 10-3/4" center-to-center spread may vary up to 1/4".
Please measure the system you receive before securing supply lines in the wall.
- 4) The 3/4" female adapter is 1-1/4" O.D. and screws 1-1/16" into the finished wall. This and your plumbing will support most of the shower's weight.



For Shower Models with Tub Filler/Foot Wash (970 & 980):

Install the spout and/or optional extension(s) prior to installing the shower on the wall.

- 5) Hold the shower against the wall and tighten the swiveling nuts onto the adapters.
- 6) Using a level, the upper mounting bracket should now be attached to the wall using the supplied screws.
- 7) For **Models 950 & 980**, a separate wall bracket is included for the hand wand. Remove the internal mounting bracket from the back by loosening the set screw. Mount the bracket on the wall with provided hardware. Affix the wall bracket with set screw pointing down, then tighten set screw.

Ensure that the hose does not have any negative tension when not in use, as it will unravel over time.



INSTALLATION GUIDE

Waterbridge 900-Series Exposed Showers

Aug 2023

- 8) Install the shower arm. Teflon tape **must** be used on the threads.
- 9) Install the rain head:
 - a) Unscrew the collar from the top of the rain head.
 - b) Using a 5/16" Allen wrench, thread the ball joint through the collar and into the shower arm until secure.
 - c) Supporting the head, tighten the collar back on to the top of the head.

Note: The shower head is shipped with a flow restrictor inside the ball joint. Removing this will cause damage.



Ball joint with Allen wrench

- 10) Turn water supply on and check for leaks.
- 11) Check volume controls and shut-off valves for proper function.

Care & Maintenance: No abrasives should be used to clean Sonoma Forge products. Mild soap and water can be used, and 100% carnauba wax to protect the finish.

All exterior plumbing must be drained if freezing temperatures are expected.