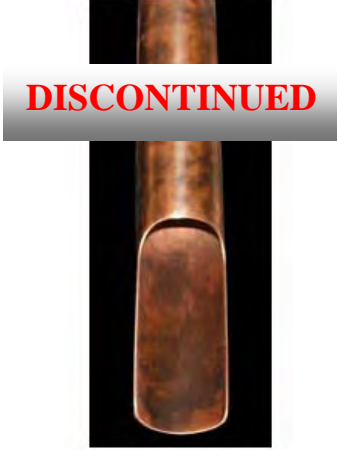


AVAILABLE FINISHES (BY COLLECTION)



Rustic Copper



DISCONTINUED

Pizazz Copper



Rustic Nickel



Pizazz Nickel

OIL RUBBED BRONZE

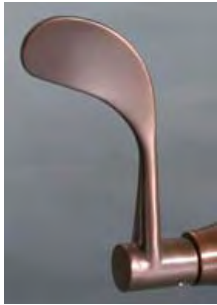
**WATERBIDGE
WHEREVER**

**WATERBIDGE
WHEREVER**

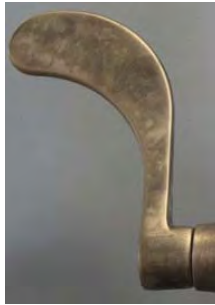
**WATERBIDGE
WHEREVER**

**WATERBIDGE
WHEREVER**

**WATERBIDGE
WHEREVER**



**WINGNUT
RUSTIC COPPER**



**WINGNUT
RUSTIC NICKEL**

**WINGNUT
OIL RUBBED BRONZE**



**BROWNSTONE
RUSTIC COPPER**



**BROWNSTONE
SATIN NICKEL**



**BROWNSTONE
ANTIQU BRONZE**



**CIXX
STAINLESS**



**CIXX
BRASS**

SOME NOTES ON OUR FINISHES

OVER THE YEARS, THE NAMES FOR OUR FINISHES HAVE CHANGED, ALTERED, REVISED IN THEIR USAGE DESCRIPTIONS - LEADING TO SOME CONFUSION.

OUR **RUSTIC COPPER** FINISH FOR EXAMPLE, HAS BEEN KNOWN AS
MELLOW COPPER,
RUSTIC MELLOW COPPER,
COPPER MELLOW
METAL COPPER
AND SO FORTH.

THEY ALL MEAN THE SAME THING, AN EVEN TONED COPPER FINISH (WITHOUT ANY MOTTLING – THAT IS TO SAY, NO IRREGULAR PATTERN OF DIFFERENTLY TONED COLORATIONS.

THE SONOMA FORGE RUSTIC COPPER FINISH IS OUR ONLY TRUE “LIVING FINISH” MEANING IT WILL CHANGE OVER TIME OR “PATINA.” THIS EFFECT WILL VARY ACCORDING TO THE CONDITIONS OF ITS ENVIRONMENT.

OUR **RUSTIC NICKEL** FINISH, HAS ALSO BEEN KNOWN AS
RUSTIC WEATHERED NICKEL,
WEATHERED NICKEL,
METAL NICKEL
AND SO FORTH.

IT HAS BEEN DESCRIBED AS A GUNMETAL GRAY FINISH. SOMETIMES IT LOOKS SIMILAR TO GALVANIZED ALUMINUM. IT HAS MODERATE MOTTLING.

OUR **PIZZAZZ NICKEL** FINISH, HAS ALSO BEEN KNOWN AS
PIZZAZZ WEATHERED NICKEL,
WEATHERED PIZZAZZ NICKEL,
(SOME PEOPLE SAY PIZZA OR PIAZZA AS WELL - WE KNOW WHAT YOU MEAN!)

IT IS SIMILAR TO OUR RUSTIC NICKEL FINISH, BUT IT HAS MORE OF A POLISH AND A HEAVIER CLEAR COAT. IT HAS MODERATE MOTTLING LIKE THE RUSTIC NICKEL.