

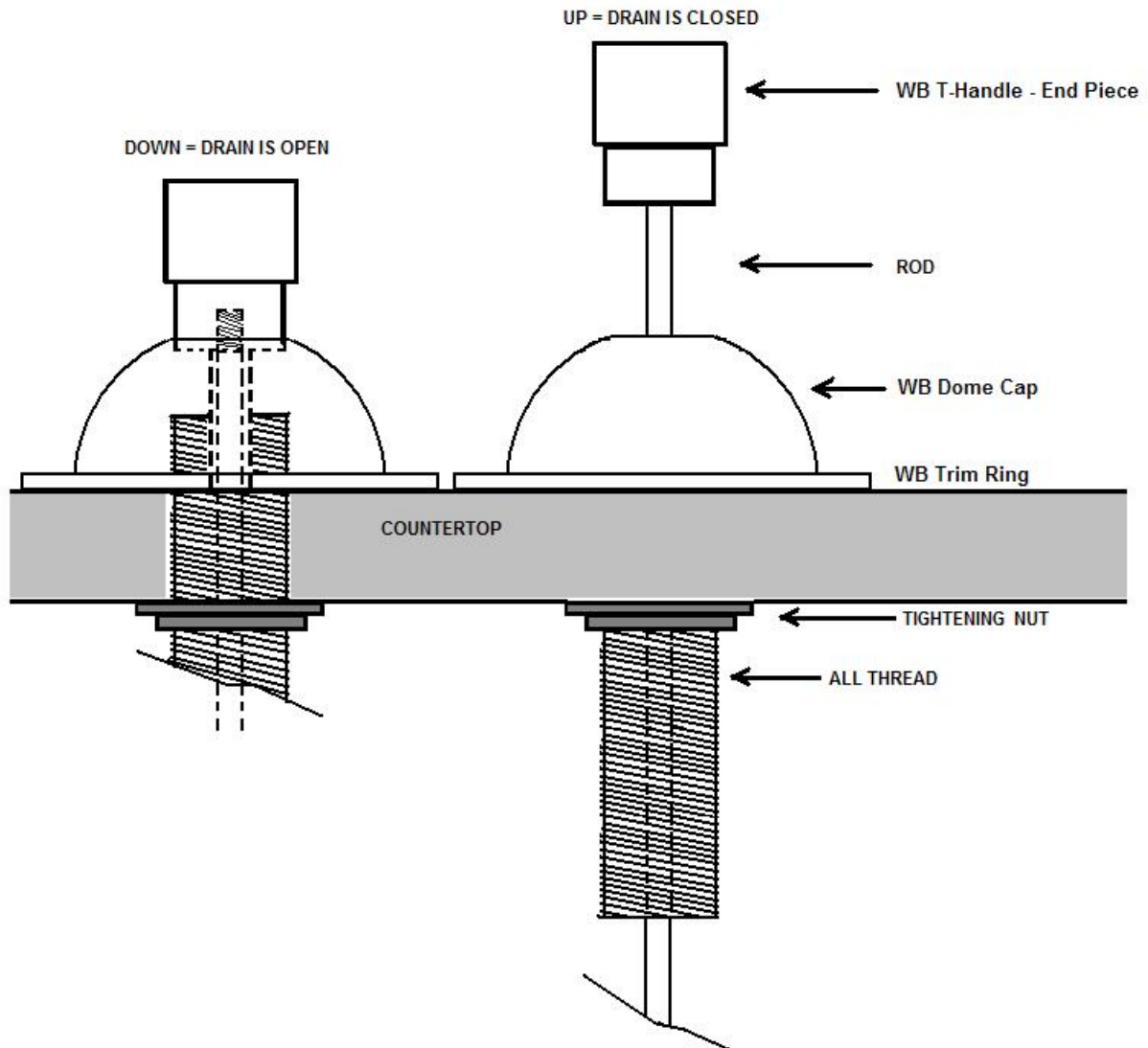


## PRODUCT SPECIFICATIONS

### POP-UP DRAIN KNOB – TRIM & DRAIN ASSEMBLY (DRAIN-POP-WB)

for

WaterBridge, WherEver & WingNut Lavs



**ALL ITEMS SHOWING ABOVE THE COUNTERTOP TO BE PLATED**



## PRODUCT SPECIFICATIONS

### POP-UP DRAIN KNOB – TRIM & DRAIN ASSEMBLY

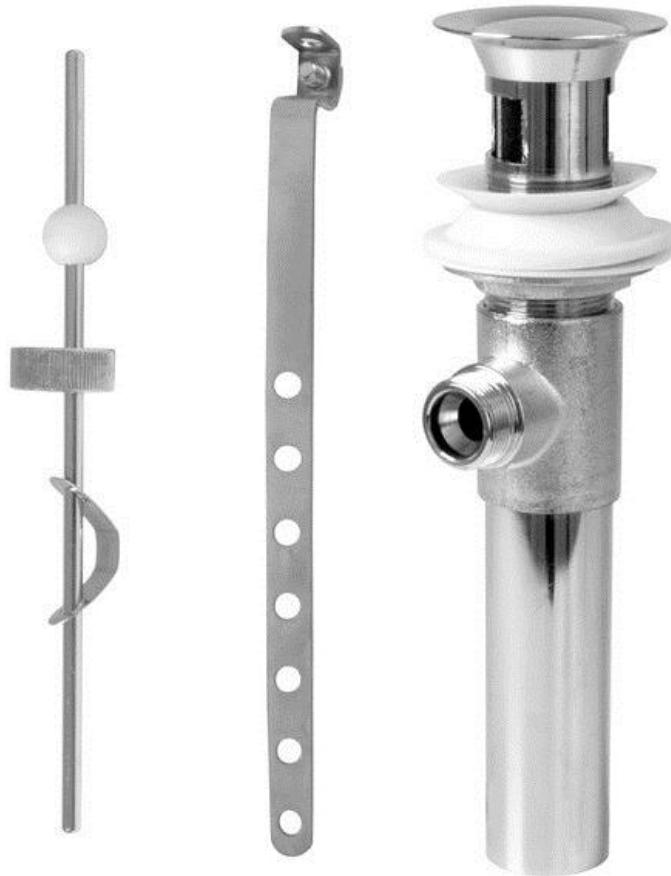




UPDATED  
VERSION  
APR 2010

## PRODUCT SPECIFICATIONS

### POP-UP DRAIN KNOB – TRIM & DRAIN ASSEMBLY



#### FACTS

All brass construction

Fits 1-1/2" hole (1-1/4" x 8" with overflow holes)

Trim plus Drain Flange and stopper are finished only

Extended ball rod 14" long available as option

Certified to meet and exceed the following codes and standards

ASME A112.18.1-2005/CSAB 125.1-2005

Available in Four Standard Finishes (WaterBridge Collection)

Rustic Copper (RC)	Oil Rubbed Bronze (ORB)
Rustic Nickel (RN)	Pizzazz Nickel (PN)

(Custom finishes available by special order)

Sonoma Forge, 133 Copeland Street, Petaluma, CA 94952  
T (800) 330-5553 T (707) 789-9130 F (707)789-9201  
www.sonomaforge.com info@sonomaforge.com



# PRODUCT SPECIFICATIONS

## POP-UP DRAIN KNOB – TRIM & DRAIN ASSEMBLY

